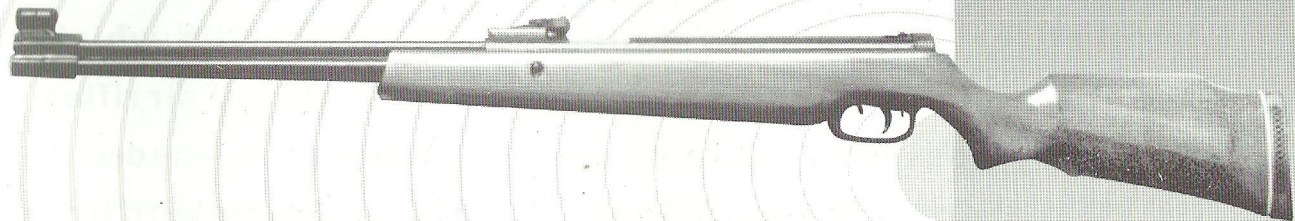


**INSTRUCTIONS
FOR
OPERATION**



**MODEL QB 36 series
AIR RIFLE**

工 字 牌



®

INDUSTRY BRAND

Warning:

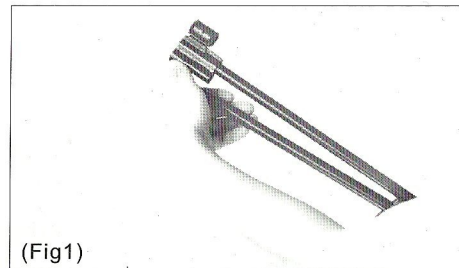
- Not a toy. This air rifle is primarily intended for adult use.
- No matter whether your rifle is loaded or not, the muzzle is not allowed to aim at anybody, to avoid any possible accident.
- When pellet loaded, never lean your rifle against wall, tree or any other movable object that could cause the rifle to fall.
- Before inserting a pellet, please be sure the piston hooks on the trigger. Do not put your finger into the chamber unless a pellet need to be inserted.
- Do not open the safety device unless you are ready to shoot.
- The buyer and user have the duty to obey all the laws regarding the use and owner ship of this rifle.

TYPE NO	QB36-1	QB36-2
Caliber	4.5mm (5.5mm)	4.5mm (5.5mm)
Trigger Force	12-25N	12-25N
Velocity	$\geq 200\text{m/s}(150\text{m/s})$	$\geq 260\text{m/s}(190\text{m/s})$
Scatter Accuracy	$\leq 25\text{mm}(45\text{mm})$	$\leq 25\text{mm}(45\text{mm})$
Safety Device	automatically turn into shooting safety	

Operations:

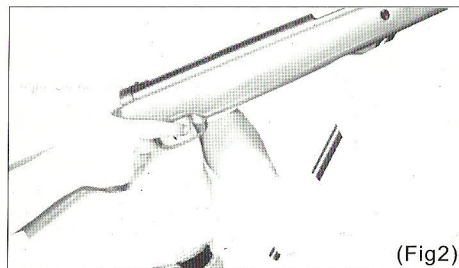
Unlocking the operating arm

Pull down the operating arm (The rifle accordingly turns into a safety state, and safety points to Send) (Fig1)



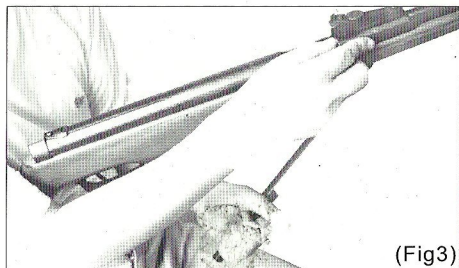
Piston hooking on the trigger

Hold the handle with your right hand and hold the stock with your sword arm. Pull down the operating arm with your left hand until the piston hooks on the trigger. (Fig2)



Loading a pellet

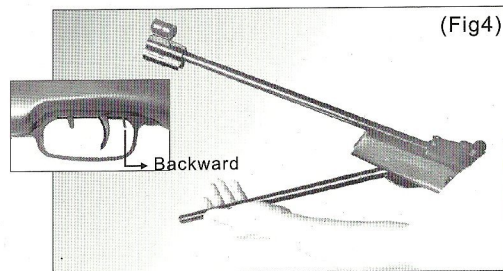
When you are sure the piston is hooking on the trigger, hold the operating arm with the left hand and insert a pellet into the chamber with the right hand. (Fig3)



Operating arm reposition

Hook the filling pellet safety backward with your right hand, and the operating arm repositions. (Fig4)

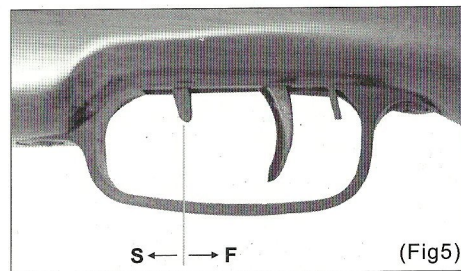
Attention: Reposition can be realized only in this way. If you do not hook the filling pellet safety backward and strongly revert the operating arm, maybe some parts of the rifle will be damaged.



Shooting

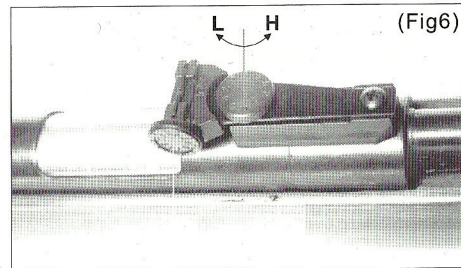
The correct way of the sight is to make up side of the gap and the top of the front sight and the down-side of the target be even. Open the safety device and shoot (F-end). When you are not ready to shoot, please point the safety to S-end. (Fig5)

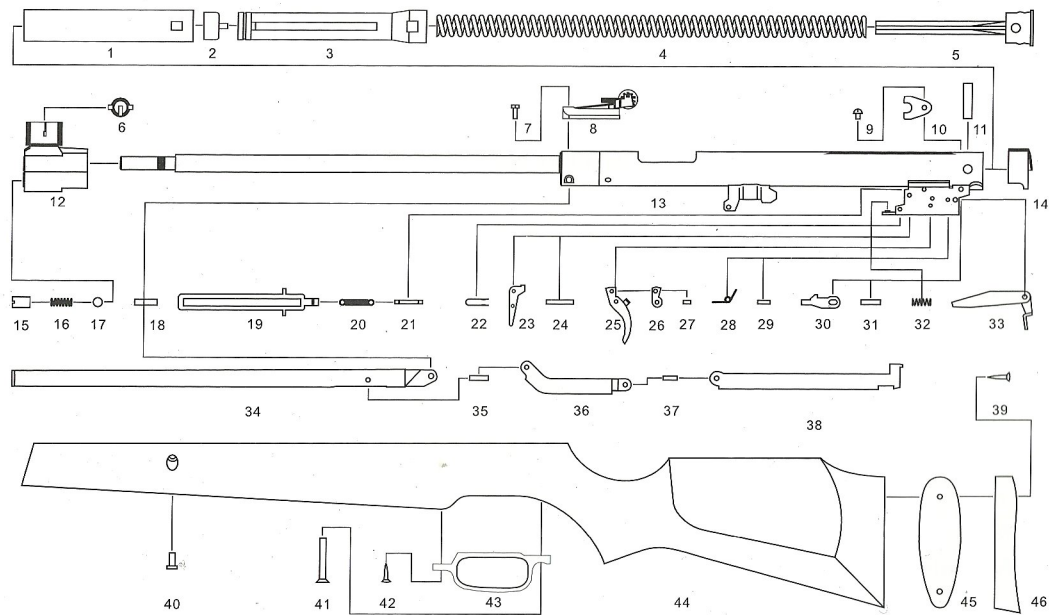
Attention: Only when the operating arm repositions, can you open the safety by hand.
In order to open the safety, you must use your hand, then you can hook the trigger and shoot.



Aiming System Adjusting

Turn up-down adjusting screw clockwise to lower the sight door when hitting point is upper, turn up-down adjusting screw anti clockwise to heighten the sight door when the hitting pointing is lower. Turn the left-right adjusting screw clockwise to move the sight door rightwards when the hitting point is left-of-center; turn the left-right adjusting screw anti clockwise to move the sight door leftwards when the hitting point is right-of-center. (Fig6)





Spare Parts List for QB36 Air Rifle

- | | | |
|-----------------------------|-----------------------------|--------------------|
| 01. Piston | 17. Steel Ball | 33. Safety Lock |
| 02. Seal | 18. Operating Arm Pin | 34. Operating Arm |
| 03. Piston Rod | 19. Safety Piece | 35. Lever Pin |
| 04. Piston Spring | 20. Tension Spring | 36. Little Lever |
| 05. Cocking Block | 21. Safety Pin | 37. Connecting Pin |
| 06. Front Sight Piece | 22. Clip | 38. Long Lever |
| 07. Screw | 23. Safety | 39. Screw |
| 08. Scale | 24. 3X25 Screw | 40. Screw |
| 09. Screw | 25. Trigger | 41. Screw |
| 10. Lens Slot Setting Block | 26. Hook | 42. Screw |
| 11. Cocking Block Pin | 27. 3X6 Screw | 43. Trigger Circle |
| 12. Front Sight | 28. Torsional Spring | 44. Wooden Stock |
| 13. Body | 29. 3X11 Screw | 45. Washer |
| 14. Tube Plug | 30. Trigger Filler lo Block | 46. Stock End |
| 15. Screw | 31. 4X18 pin | |
| 16. Spring for Steel Ball | 32. Safety Lock Spring | |

Notice: There is no No.14 part in the model QB36-1 air rifle.